



ANNUAL REPORT 2025

SERVING THE PEOPLE
AND ANIMALS OF
SISKIYOU COUNTY
SINCE 1968



About Us

Since its founding in **1968**, the Siskiyou Humane Society Adoption Center in Mount Shasta has provided rescue and refuge for hundreds of homeless cats and dogs every year.

Platinum
Transparency
2025

Candid.



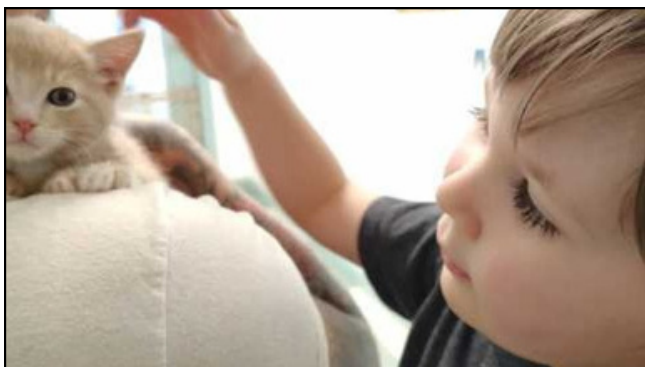
Our Mission

Improving the lives of companion animals through sheltering, rehabilitation, spay/neuter access, and permanent homes—while promoting responsible pet ownership and compassion through education and outreach.

Our Locations

- Adoption Center: 1208 N Mt Shasta Blvd, Mt Shasta
- Thrift Store: 110 W Lake St, Mt Shasta
- Pet Resource Center: 109 N Broadway St, Yreka





**“Animal welfare
is about more
than rescue—it is
about prevention
and
partnership.”**

From Our Executive Director

At Siskiyou Humane Society, our mission is clear: to protect, care for, and advocate for the animals who depend on us. Every day, we work to create a community where compassion leads the way, giving every pet the chance for a healthy, happy life while ensuring every person has access to the resources they need to be a responsible, loving pet owner.

In 2025, we offered a safe haven for more than seven hundred animals, provided one hundred spay and neuter vouchers to help our community reduce pet overpopulation, and hosted seven low-cost vaccine clinics to keep pets healthy and protected. These efforts reflect our commitment to treating every animal with dignity and respect, whether they are with us for a day or a lifetime. Beyond sheltering, we focused on education, outreach, and community support—because animal welfare is about more than rescue; it is about prevention and partnership.

This work is only possible because of the incredible support of our volunteers, donors, community partners and staff.

Together, we are building a future where fewer animals face abandonment, where families have the tools they need to care for their pets, and where kindness is the foundation of every decision.

As we look ahead to 2026, we are committed to expanding community spay/neuter access, increasing outreach, and continuing to provide lifesaving care for every animal who needs us.

Thank you for standing with us. Your continued support ensures that Siskiyou Humane Society remains a safe place for animals in need—and a trusted resource for the people who love them.

**Austin
Browder**

*Executive
Director*

Siskiyou
Humane
Society



Our Impact

710 Animals Sheltered

485 Adoptions

340 Cats **202 Dogs**

7,100 Volunteer Hours

30 Adoption, outreach & education events

1,315 Pounds of pet food given to local families in need.



Reunited with Families

65 lost dogs and cats returned home

Spay & Neuter

378 Shelter-related surgeries

100 Public Spay Neuter Vouchers

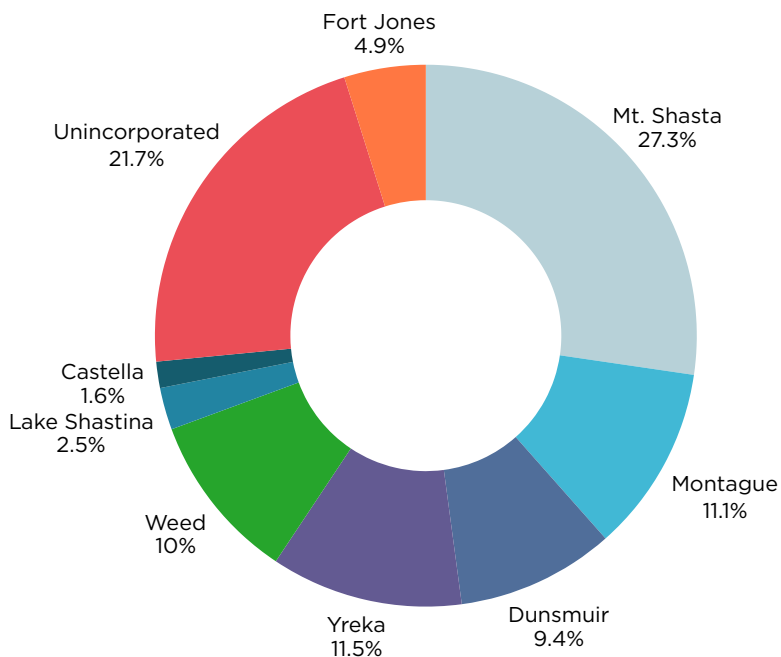
2026 Goal

300+ vouchers by May

Community Reach

Serving Siskiyou County

Our most common intake sources include: Mount Shasta, Yreka, Weed, Dunsmuir, Fort Jones, Etna, Montague, Castella, Lake Shastina, and rural Siskiyou County



Shelter Care Statistics

369 cats

Stayed on avg.

18 days

299 dogs

Stayed on avg.

40 days

+ 2 guinea pigs & 2 rabbits



Community Services & Outreach

Clinics & Preventative Care

Preventing Overpopulation & Keeping Pets Healthy

7

Clinics Total

Low-cost vaccine and microchip clinics

4 in Yreka

3 in Mt. Shasta

485

Animals Vaccinated



75

Animals Microchipped

Proudly Local. Community Powered.

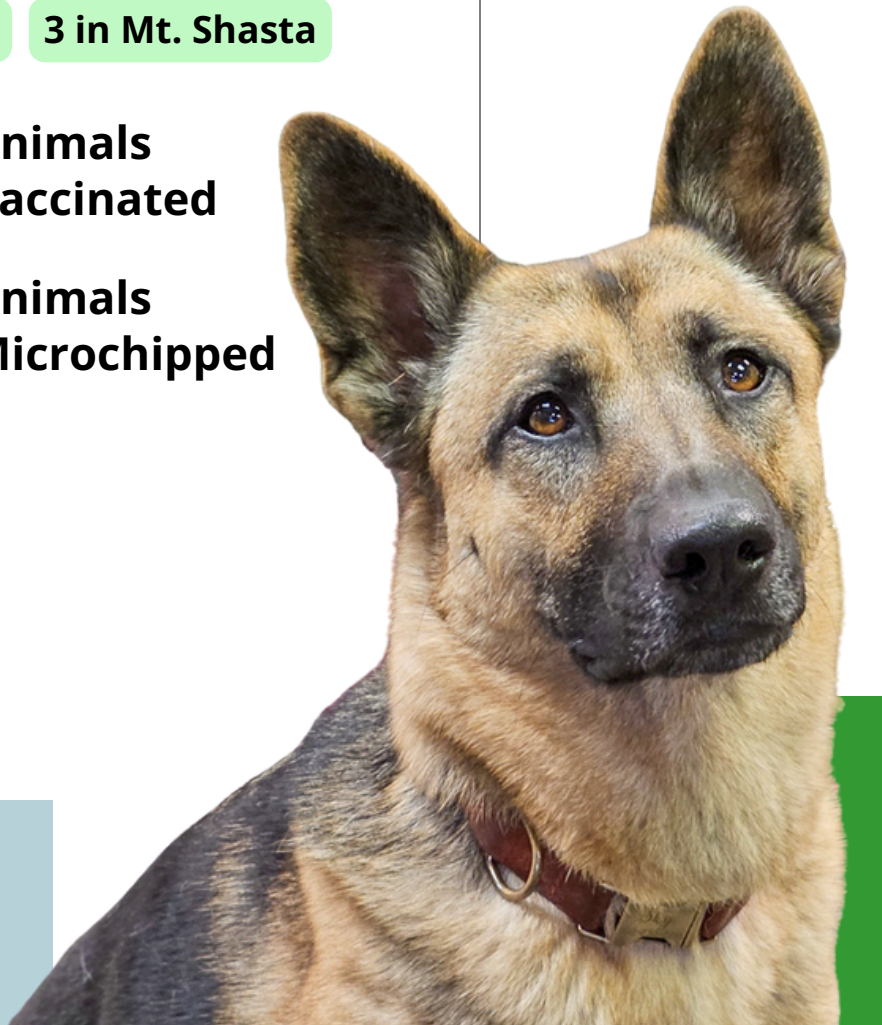
Siskiyou Humane Society is an independent, community-based nonprofit. We are not affiliated with national organizations and receive no government funding. Every service we provide is made possible by the generosity of our Siskiyou County community.

Education & Outreach

Education, Outreach & Events

- 14 adoption events
- 13 outreach events
- 3 educational school visits

Through education and outreach, we help families care for pets before they ever need shelter services.

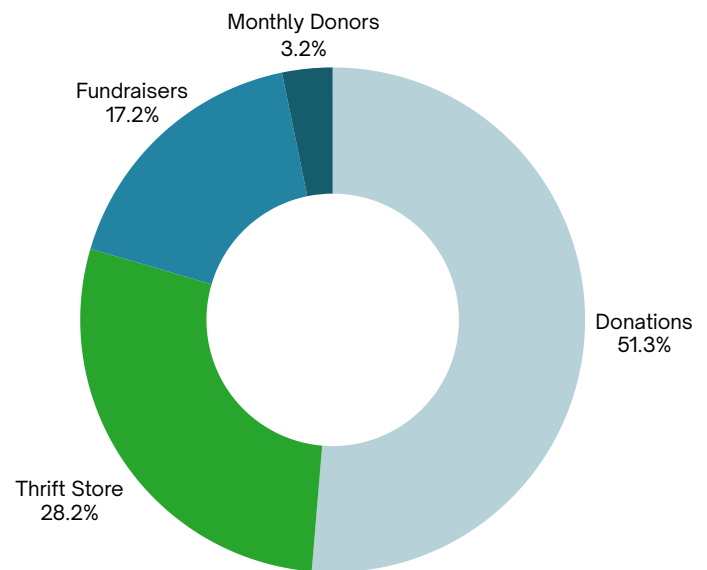


Financial Overview: 2025

In 2025, Siskiyou Humane Society invested heavily in lifesaving care. While expenses exceeded income, every dollar supported animals and community services.

Income: \$525,000

- Donations: \$271,000
- Thrift Store: \$149,000
- Fundraisers:
 - Giving Tuesday: \$62,000
 - Art, Wine & Brew Festival: \$20,000
 - Garden Party: \$9,000
- Monthly donors: \$17,000



Expenses: \$801,000

- Animal care & shelter operations: \$275,000
- Medical services: \$86,000
- Adoption programs: \$95,250
- Community outreach & education: \$94,750
- Insurance, taxes, utilities: \$110,000
- Administrative costs: \$140,000

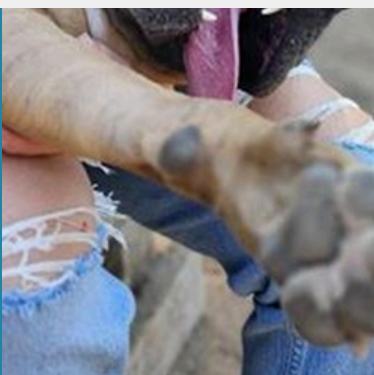
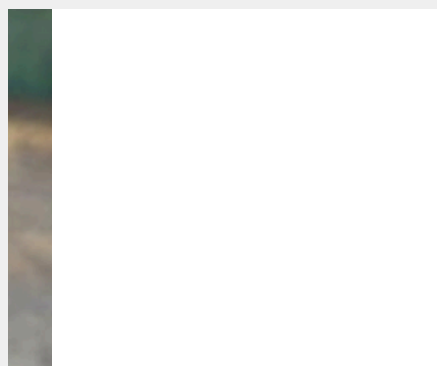
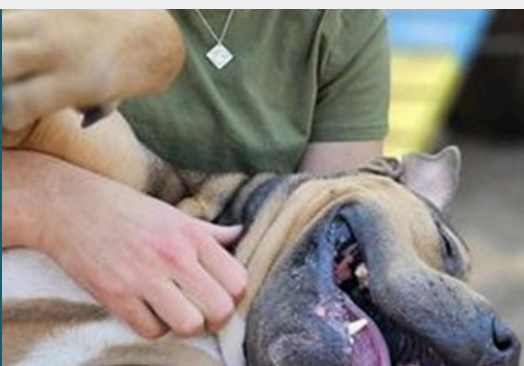
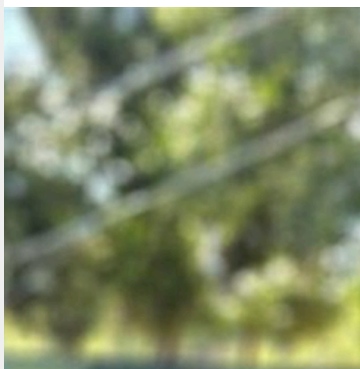
Our Commitment for 2026

- Building new and sustaining financial partnerships
- Seek grants for facility improvements to reduce maintenance costs
- Maintain an average of one adoption per day
- Host 7 low-cost vaccine & microchip clinics
- Provide 400+ grant funded spay/neuter vouchers
- Build partnerships to improve access to animal healthcare



With your continued support, we can build a future where fewer animals enter shelters and more families stay whole.





Get Involved

ADOPT • FOSTER • VOLUNTEER • DONATE



(530) 926-4052



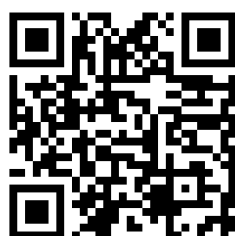
1208 N Mt Shasta Blvd.
Mount Shasta, CA. 96067



siskiyouhumane.org



@siskiyouhumane



EIN # 94-2411106

